

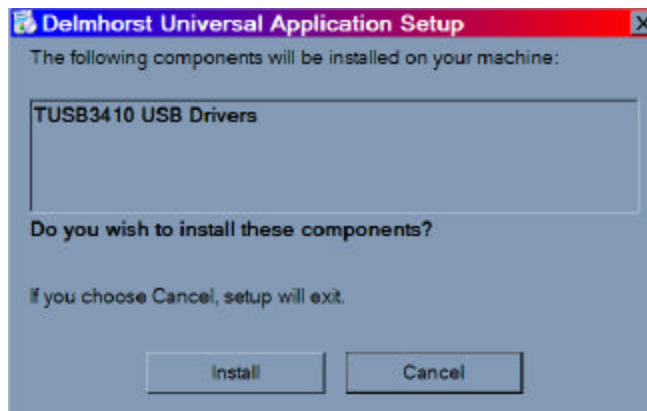
Base Unit USB Installation

1. WARNING: It is recommended that you uninstall any previous versions of the Delmhorst Universal Application or Navigator Series Application prior to installing the USB version.
2. NOTE: The installation program will install the TUSB3410 USB drivers even if you have a RS-232 (Non USB) Base Unit, however the drivers will only be activated in your system if a USB Base Unit is detected.
3. NOTE: Upon inserting the Installation CD, the installation program should automatically start. If it does not start, you can manually execute the installation program by double clicking 'setup.exe' in your CD drive in My Computer.

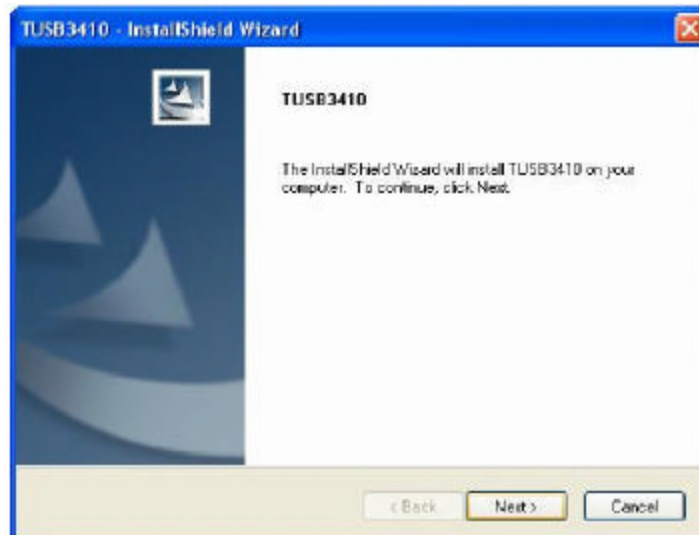
USB Drivers (Install Prior to plugging the Base Unit in!):

You will be asked to install the required 'TUSB3410 USB drivers' if they are not already on your system. If the drivers are already detected on the system, the installation process will skip to the next section 'Software Installation'.

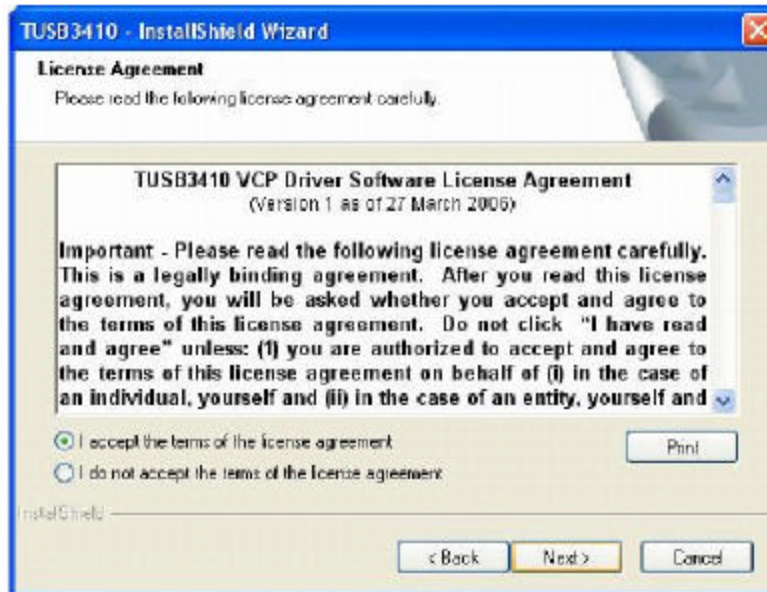
1. Choose 'Install'.



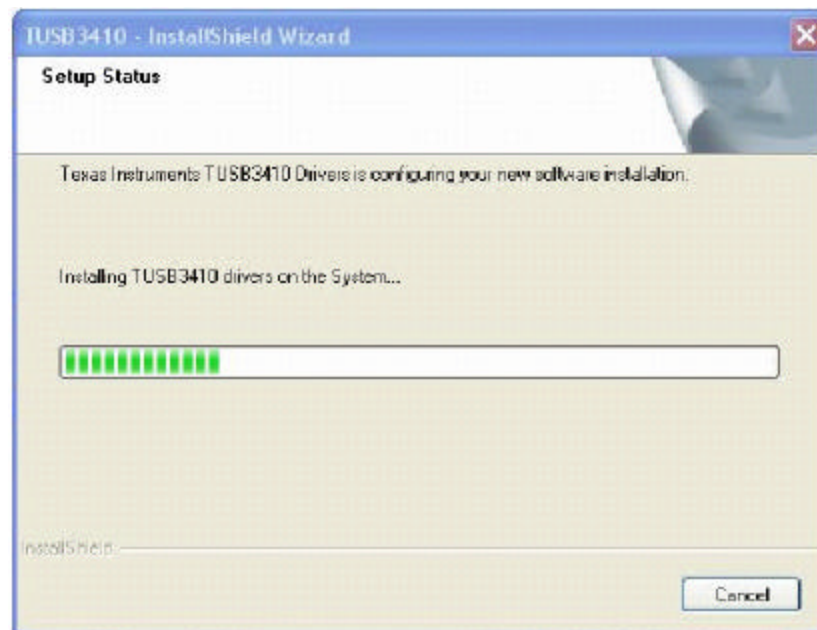
2. Click 'Next'.



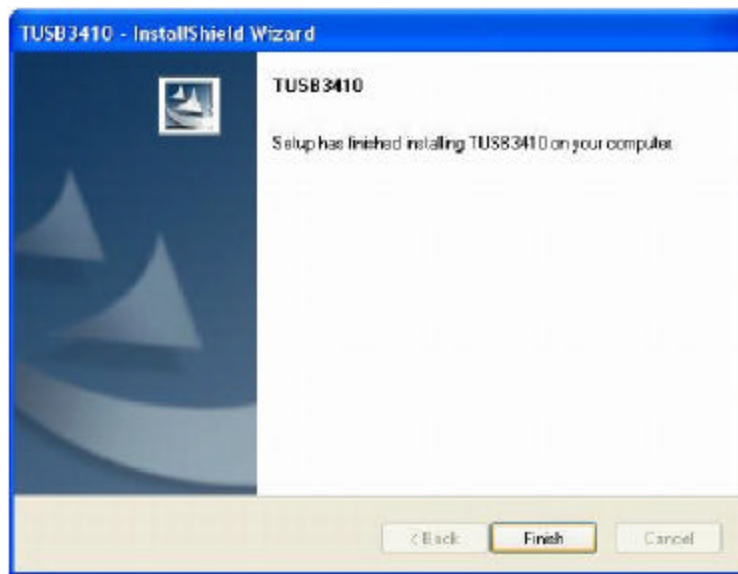
3. Click next after accepting the USB driver installation agreement.



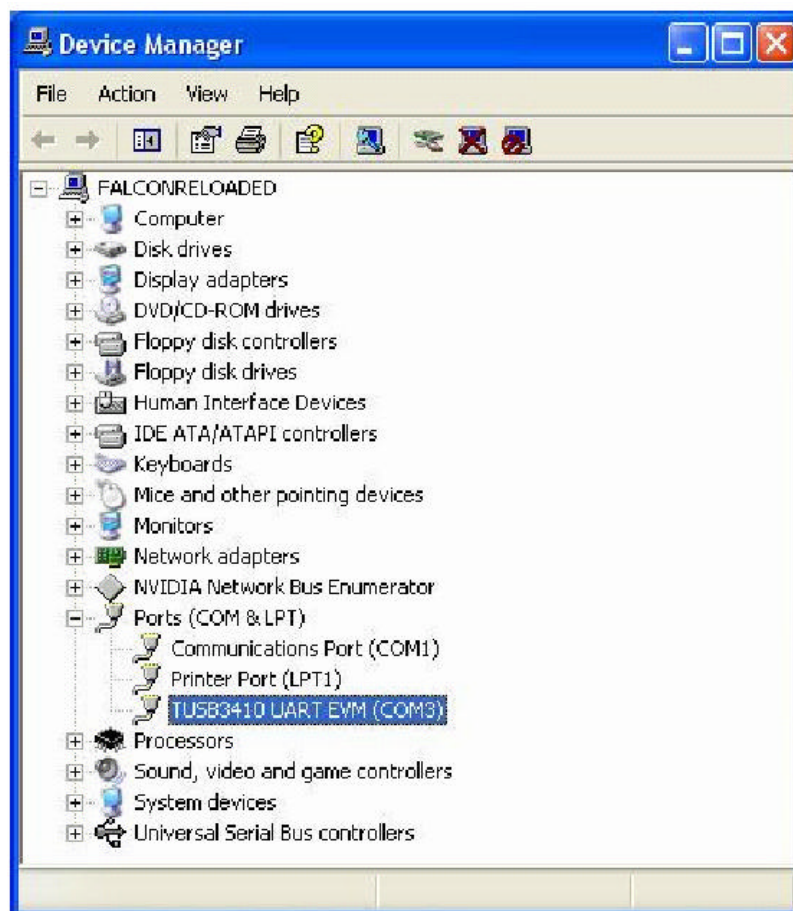
4. Wait for TUSB3410 VCP Driver installation progress to finish.



5. Click Finish to complete installation of the TUSB3410 USB drivers.



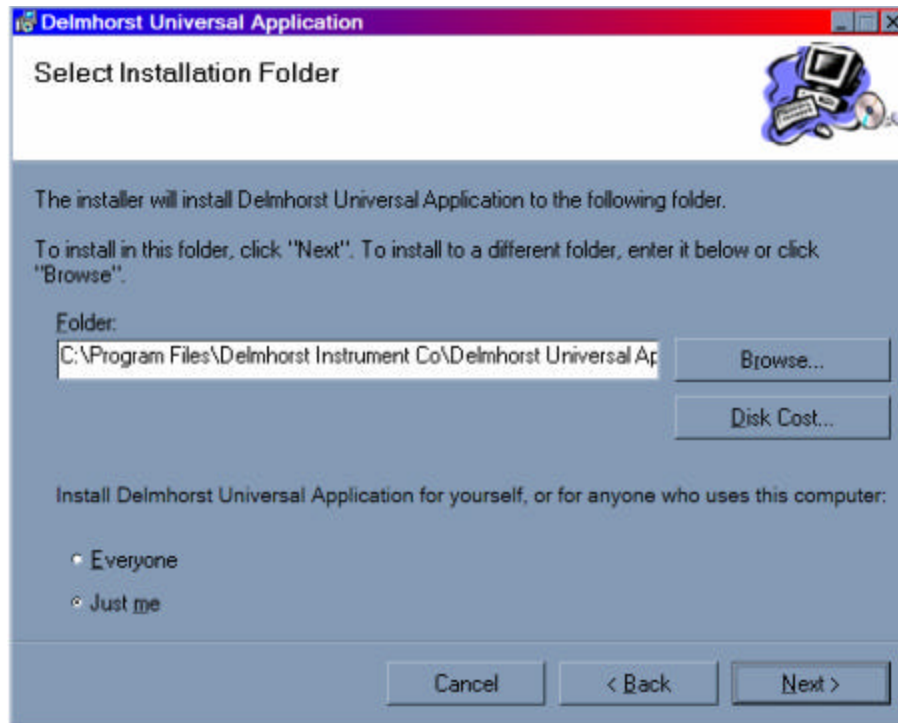
6. A successful installation is as shown by the Device Manager display below. Inside the Ports Category, a VCP (Virtual COM Port) port is installed.



Software installation:

The installer will now prompt you to install the Delmhorst Universal Application or Navigator Series Application depending on the meter purchased.

1. Click 'Next' on the initial screen. Choose the location to install and 'Next' again to begin the installation.



2. The installation will finish and your application is ready to use!

Delmhorst Instrument Co.
51 Indian Lane East
Towaco, NJ 07082
Ph: 877-DELMHORST (877) 335-6467
Fax: 973-334-2657
Web Site: www.delmhorst.com